

TorqLOC[®] for easy installation and removal

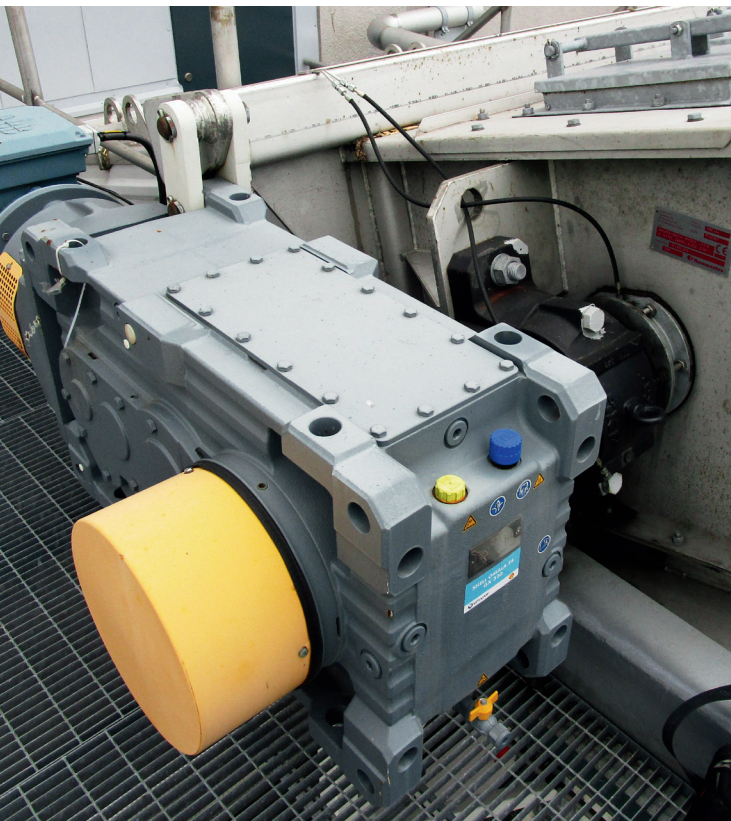
Hollow shaft mounting system for standard and large industrial gear units



Easy shaft removal

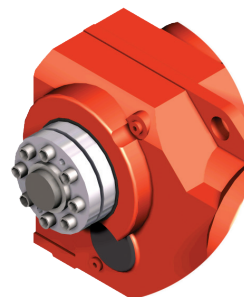
Our patented TorqLOC® hollow shaft mounting system has already proven its worth in thousands of standard gear unit installations around the world. It is a simple, reliable and intelligent way of connecting the hollow shaft gear unit with the customer's machine shaft that doesn't require keyways or tight tolerances, and is just as easy to remove as it is to install.

TorqLOC ensures a non-positive terminal connection that works in a similar way to conventional shrink disk connections. In addition to the hollow shaft, which is integral to the gear unit, the system consists of a shrink disc, an optional clamping ring and two conical bushings that are mounted in both sides of the hollow shaft.



Advantages

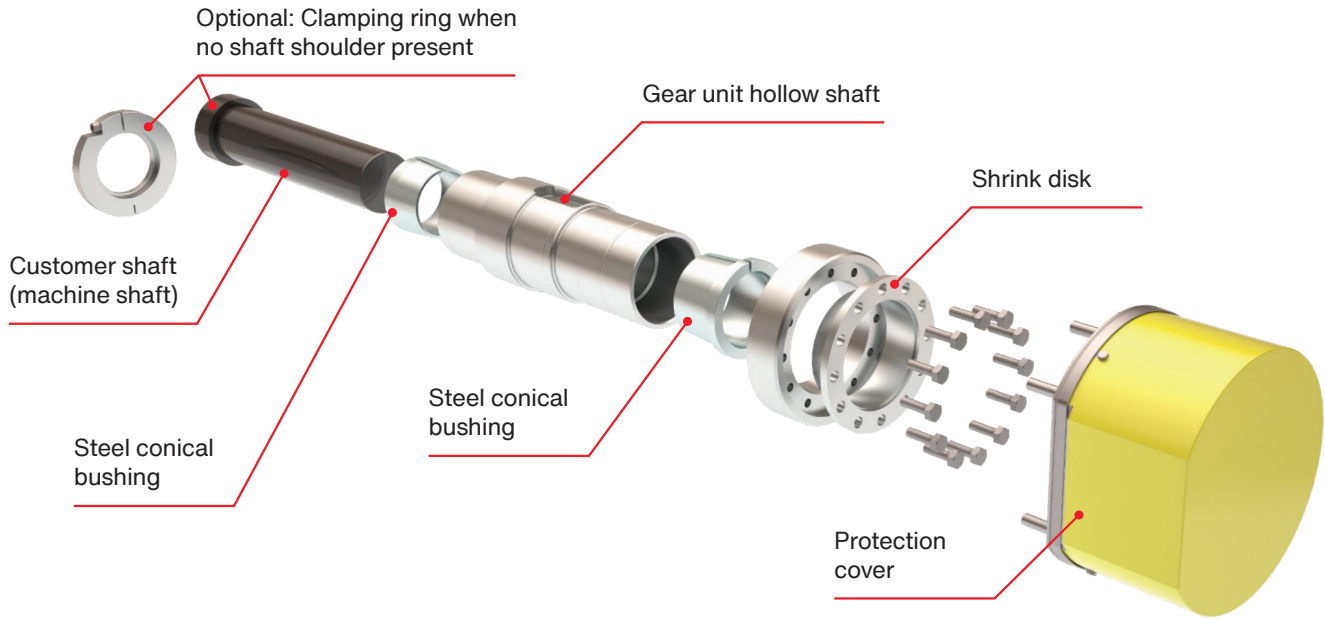
- Quick and easy installation onto your machine shaft, no adjustment or force required because no interference fits involved
- Quick and easy removal from your machine shaft because contact corrosion is a thing of the past
- Highly adaptable as the drive can be used with a range of different machine shaft diameters through the use of different bushings
- Reduced costs as unprocessed material with tolerance class h11 or better can be used for the machine shaft without the need for any keyways.



Assembly



Disassembly

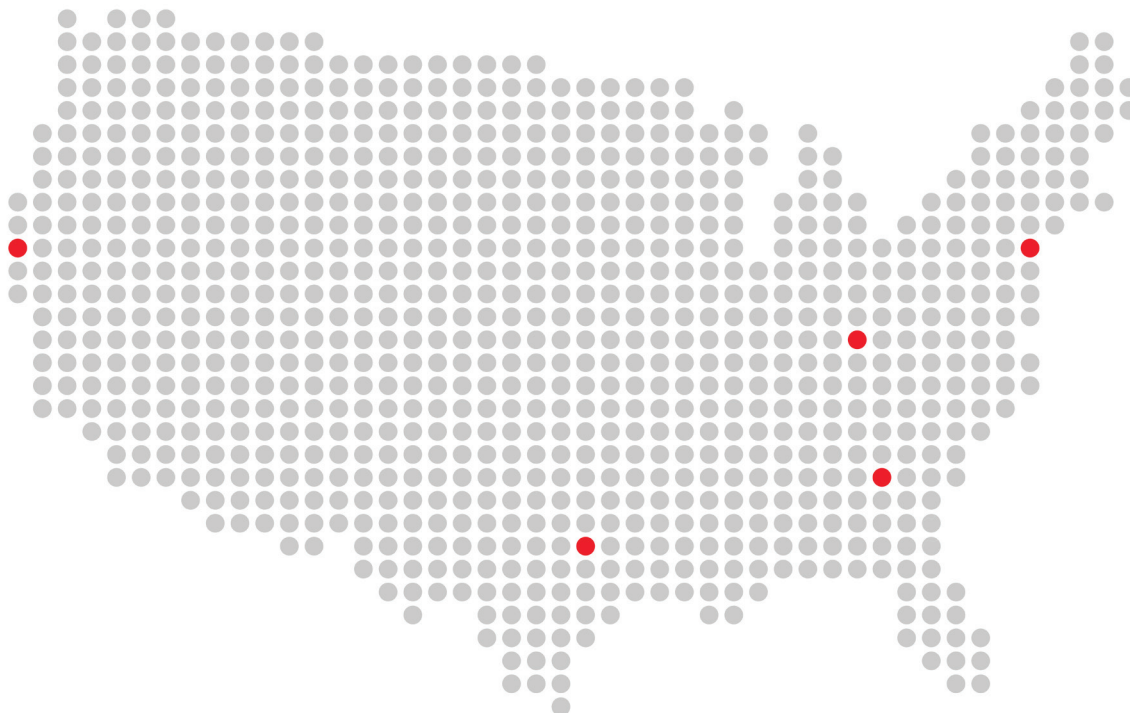


Technical Data

Helical and bevel-helical gear units with torques from 7.2 to 96 kNm and gear ratios from 6.3 to 450.

Size	Machine shaft diameter mm	Machine shaft diameter in	Nominal torque M_{N2} kNm
X100e	75	2-5/16	7.2
X110e	80 / 85	2-5/16	9.0
X120e	90 / 95	3-7/16	13.6
X130e	100 / 105	3-15/16	17.0
X140e	110 / 115	4-7/16	23.4
X150e	115 / 120 / 125	4-15/16	29.2
X160e	125 / 130 / 135	4-15/16	38
X170e	130 / 135 / 140 / 145	5-7/16	47.5
X180e	140 / 145 / 150 / 155 / 160	5-15/16	61
X190e	150 / 155 / 160	5-15/16	69
X200e	155 / 160 / 165 / 170 / 175	6-1/2	83
X210e	165 / 170 / 175 / 180 / 185	7	96

Bold = preferred/standard machine shaft diameters



U.S. locations

U.S. Headquarters/Southeast Region

SEW-EURODRIVE, Inc.
220 Finch Road
Wellford, SC 29385
P: (864) 439-7537
cslyman@seweurodrive.com

Southwest Region

SEW-EURODRIVE, Inc.
202 W. Daniieldale Rd.
DeSoto, TX 75115
P: (214) 330-4824
csdallas@seweurodrive.com

Western Region

SEW-EURODRIVE, Inc.
30599 San Antonio St.
Hayward, CA 94544
P: (510) 487-3560
cshayward@seweurodrive.com

Midwest Region

SEW-EURODRIVE, Inc.
2001 West Main St.
Troy, OH 45373
P: (937) 335-0036
cstroy@seweurodrive.com

Northeast Region

SEW-EURODRIVE, Inc.
2107 High Hill Rd.
Bridgeport, NJ 08014
P: (856) 467-2277
csbridgeport@seweurodrive.com

Industrial Gears

SEW-EURODRIVE, Inc.
148 Finch Rd.
Wellford, SC 29385
P: (864) 439-8792
igssorders@seweurodrive.com