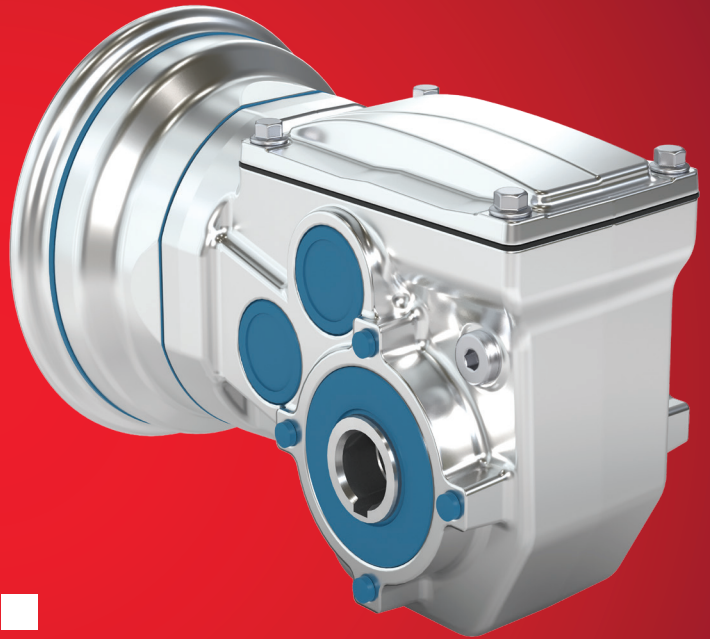


Clean. Compact. Less heat.



The new **WES Series** stainless steel units run much cooler than the competition by substantially reducing sliding gear friction and delivering superior heat dissipation properties. This hygienic Spiroplan® gear unit with wear-free gearing produces more torque in a lightweight design.



Scan to learn more

WES Series features

- Decreased friction reduces maintenance and costs
- Eliminate scalding surface temperatures for added safety
- Lightweight, compact design

Technical data

Type	Max. output torque (lb-in)	Ratio range
WES..19 NEW	710	5.09 – 167.59
WES..29 NEW	1,150	4.68 – 188.47

SEW
EURODRIVE

www.seweurodrive.com

9MD1262/ US / 0225