

Drive Systems for the Mining Industry



We drive the mining industry

... Global Availability

... Local Support

... Proven Reliability

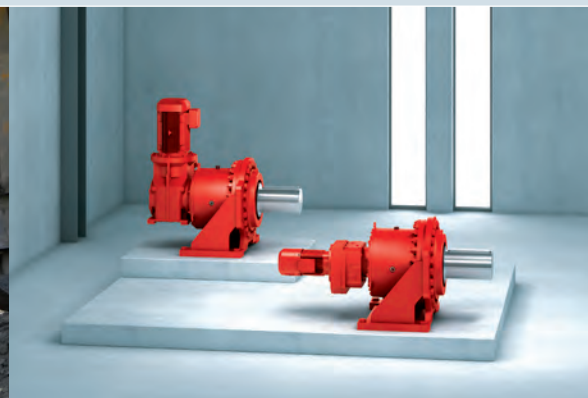
... Innovative Solutions

SEW-EURODRIVE has earned a reputation worldwide for rugged and reliable gear units. With nine assembly plants in North America, we are well equipped to service the mining industry with our proven industrial gear units.

Our Industrial Gear Facility, located in Wellford, South Carolina, houses assembly, engineering, and maintenance services for a broad range of industrial gear units. The 160,000 sq. ft. facility is equipped to handle nearly any industrial gear assembly or maintenance project, ranging from replacing seals to building 40 ton drive packages.

Additional services and benefits include:

- Training
- Plant surveys
- Commissioning
- Energy calculations
- Base plate design and manufacture
- Alignment of equipment
- Fitment of customer supplied parts
- Service



Frequency Inverters

Select from the MOVITRAC® LTE B+ or the more advanced MOVITRAC® LTP-B Standard.



MCLTE-B+

- .5 – 50 HP
- Single-phase - 115V & 230V
- Three-phase - 230V & 460V
- IP20 ambient 50° C
- IP66 ambient 40° C
- 150% overload for 60s
- 175% overload for 2s
- Operates induction motors
- Remote keypad
- SBus communication
- CanOpen
- 3 digital inputs/1 digital output
- Analog input/output
- Relay contact
- Integrated RFI filter available 230V/460V
- Brake chopper available
- Switched/non-switched
- TF/TH thermal protection
- Smart vector control
- Motor current clamp
- PI controller
- Fire/Emergency mode

MCLTP-B Standard



- 1 – 250 HP
- Single-phase - 230V
- Three-phase - 230V, 460V, 575V
- IP20 ambient 50° C
- IP55/IP66 ambient 40° C
- 200% overload for 60s
- 250% overload for 2s
- Operates PM motors
- Remote keypad
- SBus and fieldbus communication
- Encoder card options
- 5 digital inputs/2 digital outputs
- 2 analog inputs/2 analog outputs
- 2 relay contacts
- Integrated RFI filter available 230V/460V
- Brake chopper available
- Non-switched
- KTY thermal protection
- High starting torque (200%)
- Preset motor data/easy start up
- Open loop speed or torque control
- Energy saving function
- Safe Torque Off
- Master/Slave operation (no PLC)
- Brake management parameters
- Parameter copy module

Standard 7-series Gear Units / Gearmotors

7-series gear units and gearmotors are available in numerous sizes and ratios. Available in a wide range of inline, right angle and slim parallel sizes, their torque density is high for their smaller, compact size.



RX and R Series: Helical (Inline)

- Torque: 440 to 159,300 lb-in
- Power: 0.125 to 250 HP
- 6 sizes (1-stage)
- 13 sizes (2-stage or 3-stage)
- 95-97% efficient
- Flange mount with extended bearing housing for agitators
- Foot or flange-mounted
- Metric or inch solid shafts



F Series: Slim Helical (Parallel)

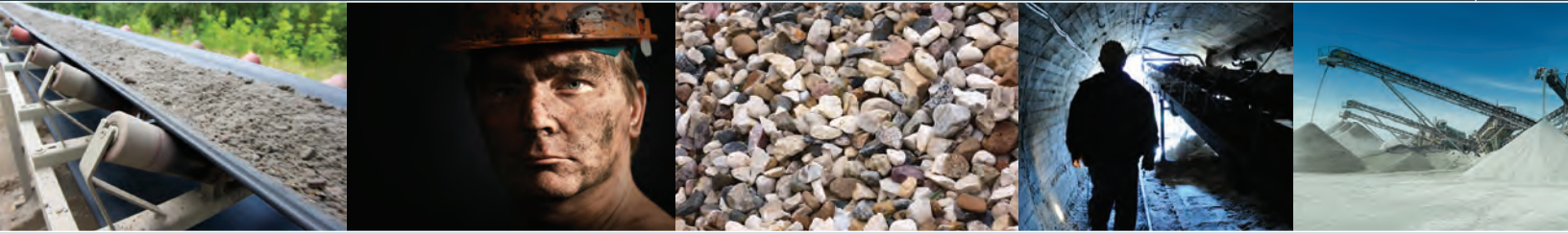
- Very slim design - use where space is limited
- Torque: 770 to 159,300 lb-in
- Power: 0.125 to 300 HP
- 11 sizes
- 95-97% efficient
- Foot mounted
- B5 or B14 flange mounted
- Solid or hollow shaft
- Hollow shaft designs: keyed, keyless shrink disc, or keyless TorqLOC® with taper bushing
- Metric or inch shafts



K Series: Helical-bevel (Right Angle)

- Torque: 1100 to 442,500 lb-in
- Power: 0.125 to 300 HP
- 12 sizes
- 95-97%
- Foot or flange-mounted
- B5 or B14 flange-mounted
- Solid or hollow shaft
- Hollow shaft designs: keyed, keyless shrink disc, or keyless TorqLOC® with taper bushing
- Metric or inch shafts



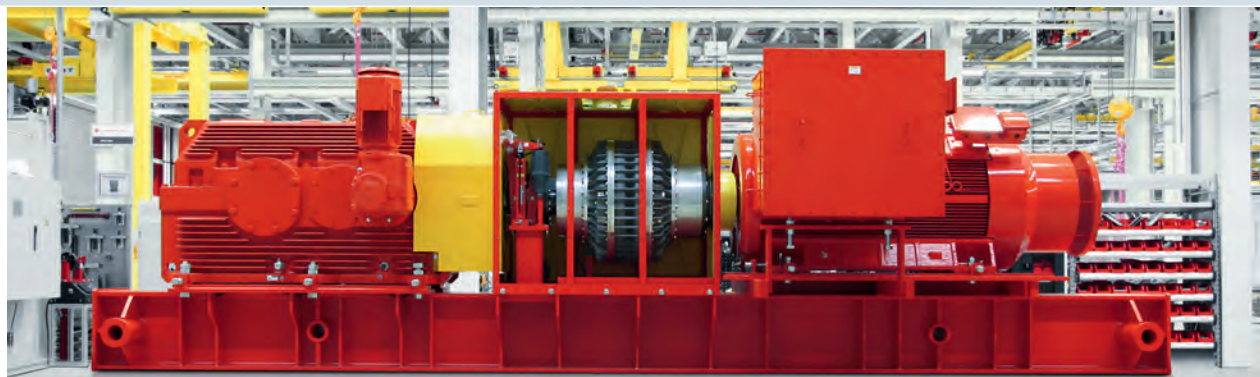


Machines and applications — Proven reliability for all mining sites

- | | |
|--|---|
| <ul style="list-style-type: none"> – Conveyor drives – Reclaimers – Stackers – Apron feeders – Slurry pumps – Screening processors / shakers – Extractor fans – Wet and dry cooling towers – Fans | <ul style="list-style-type: none"> – Elevators – Crushers – Dredgers – Bucket chain elevators – Slewing drives – Lifting devices – Hoisting machinery – Travel drives – Mixers – Thickeners |
|--|---|

Companies around the world rely on SEW-EURODRIVE for quality engineering. We have been fulfilling that reputation for more than 80 years.

Drive packages for the mining industry are available from SEW-EURODRIVE with in-house engineering and assembly, no matter the size or scale of the application

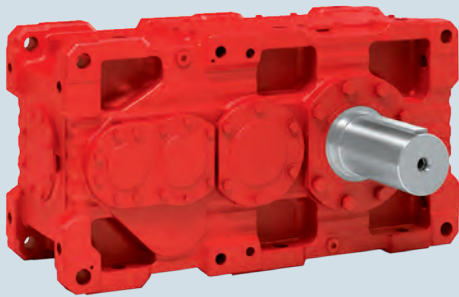


Industrial Gear Units . . . Custom is our Standard

Available as a stand-alone gear unit or integrated into a complete drive package containing swing base and accessories, our industrial gear units perform under difficult conditions and provide movement wherever high torque and maximum reliability are required.

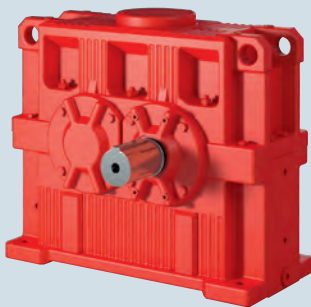
With a wide selection of industrial gear types, we offer extremely large output torques to handle a huge sector of demanding applications.

Since our industrial gear units are designed using a modular concept, we are able to offer considerable customization using standard parts.



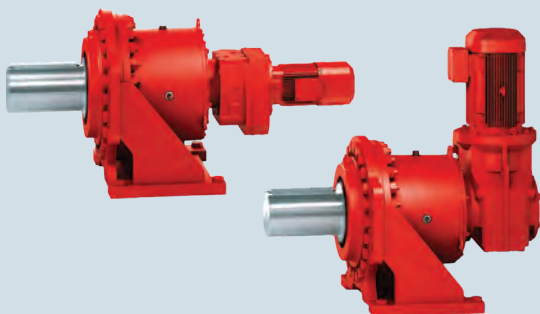
X Series

- Robust housing
- Reduced cost - 23 sizes prevents oversizing
- Reduced weight - high power density
- Reversible - can be inverted for either right-hand or left-hand shaft
- Innovative, patented cooling systems
- Torque: 513,000 - 4,204,000 lb-in
- Flexible mounting
- Helical or helical-bevel
- Worldwide service
- Local stock and assembly in South Carolina



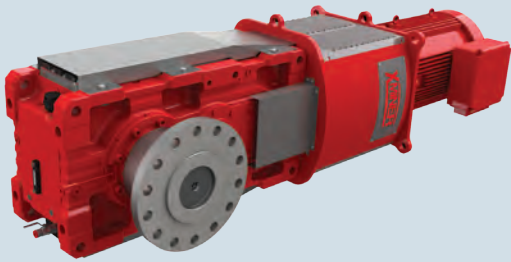
M1..N Series

- Helical Gear Units
- Torque: 11,500 - 2,173,000 lb-in
- Ratios: 1:1 - 7:1
- Frame Sizes: 12
- Robust split gear unit housing
- Reliable sealing and dust-proof systems
- Effective cooling systems
- Worldwide service
- Local stock and assembly in South Carolina



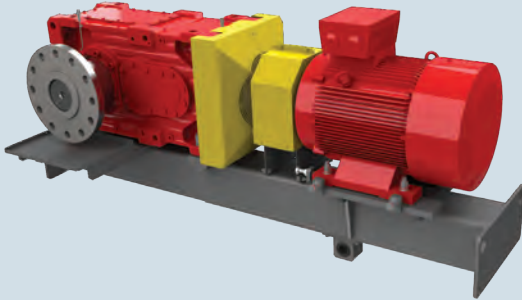
P Series

- Torque to 4,425,000 lb-in
- Very compact
- High torsional rigidity
- Helical or helical-bevel gearmotor integrated on the input
- Very wide selection of gear ratios
- Local stock and assembly in South Carolina



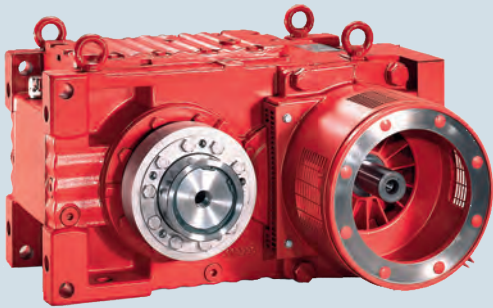
XMiner

- Complete drive package of the X Series
- Available in 16 sizes
- Torque range: 60,200 to 1,549,000 lb-in
- Innovative/patented cooling system
- Alignment-free with tunnel housing
- Reversible housing
- Taconite heavy duty sealing system with labyrinth path
- Local assembly in South Carolina



Integrated drive packages

- Complete package: gear unit, coupling, motor, drive base, guard
- SEW-EURODRIVE engineered steel drive base
- Laser aligned components
- Single resource for all drive components



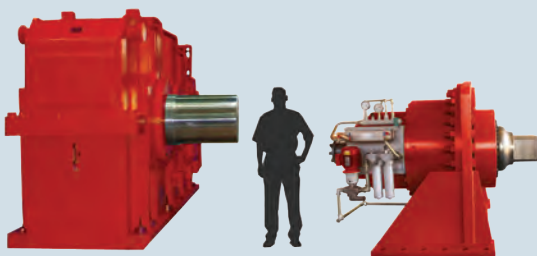
MC Compact Series

- Compact helical or helical-bevel gear units
- Available in eight sizes
- Torque range: 53,100 – 570,000 lb-in
- Optional pressure lubrication
- Regional inventory availability
- Local stock and assembly in South Carolina



EBD – Extended Bearing Distance

- Mixer and Agitator Drive using MC Series
- Extended bottom bearing housing
- Higher capacity bearings
- Optional larger diameter output shaft
- Increased axial or radial loads
- Increased strength and rigidity
- Agitators, mixers, aerators, dry-cooling towers, or thickeners
- Optional drywell sealing system to prevent oil leakage at the output shaft in vertical mounting positions
- Torque: to 570,000 lb-in



Customized IG & XP Planetary

- Custom gear units up to 60 tons
- Torque: to 44,250,000 lb-in
- Helical, helical-bevel, torque split, and planetary gear units
- Extra heavy-duty for mining, sugar, and industrial applications
- Housing sizes up to 15 ft. long, 9 ft. high
- All components made in-house
- Factory load testing before dispatch available

Driving the world.

U.S. Operations

Southeast Region (U.S. Headquarters)

220 Finch Road
Wellford, SC 29385
P: (864) 439-7537
cslyman@seweurodrive.com

Midwest Region

2001 West Main St.
Troy, OH 45373
P: (937) 335-0036
cstroy@seweurodrive.com

Northeast Region

2107 High Hill Rd.
Bridgeport, NJ 08014
P: (856) 467-2277
csbridgeport@seweurodrive.com

Southwest Region

202 W. Danieldale Rd.
DeSoto, TX 75115
P: (214) 330-4824
csdallas@seweurodrive.com

Western Region

30599 San Antonio St.
Hayward, CA 94544
P: (510) 487-3560
cshayward@seweurodrive.com

Large Industrial Gears

148 Finch Rd.
Wellford, SC 29385
P: (864) 439-8792
igorders@seweurodrive.com

www.seweurodrive.com

SEW
EURODRIVE