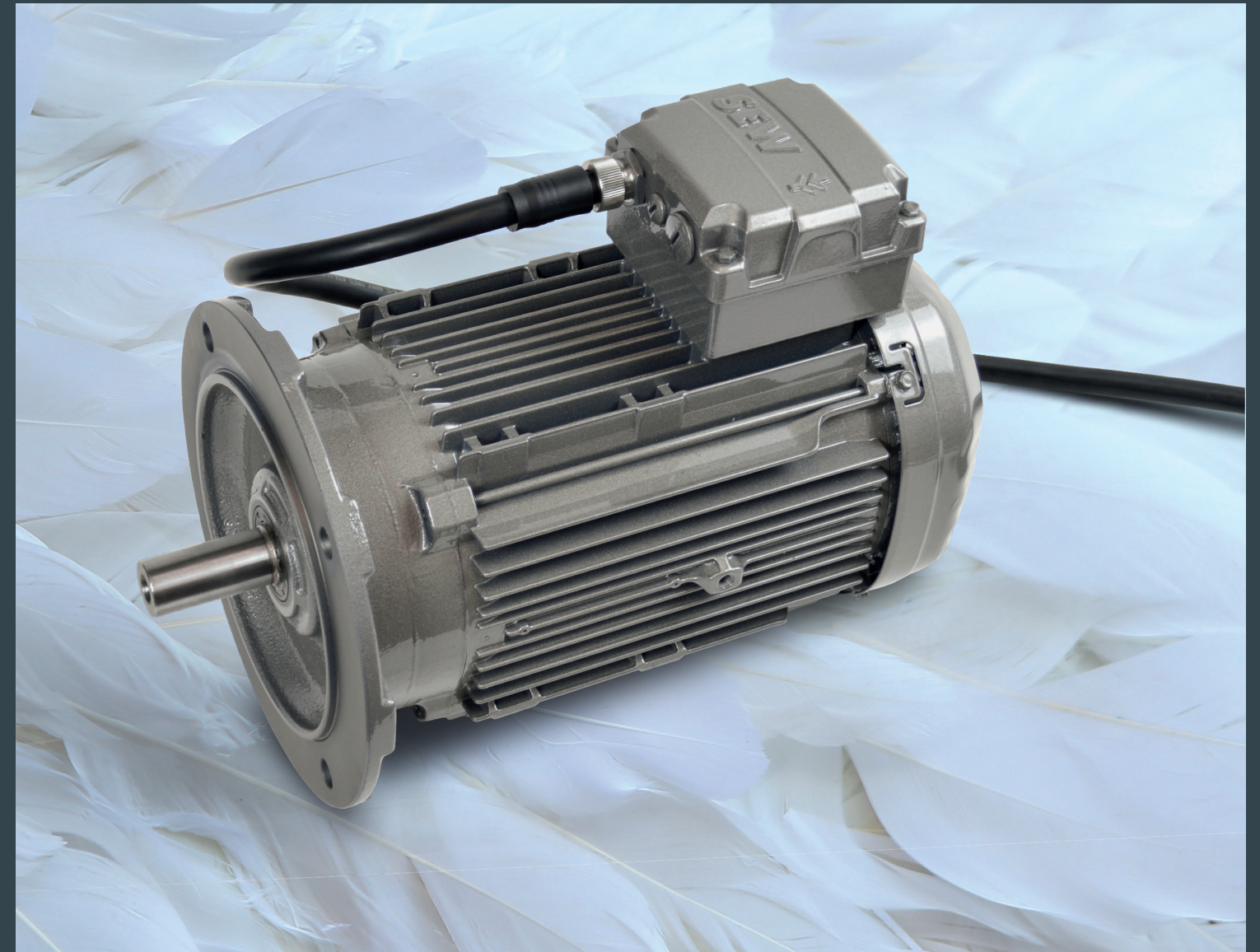




Driving the world.

Harsh Environment Motor

Superior performance in defeathering/picker applications



U.S. Operations

Southeast Region (U.S. Headquarters)

220 Finch Road
Wellford, SC 29385
P: (864) 439-7537
cslyman@seweurodrive.com

Midwest Region

2001 West Main St.
Troy, OH 45373
P: (937) 335-0036
cstroy@seweurodrive.com

Northeast Region

2107 High Hill Rd.
Bridgeport, NJ 08014
P: (856) 467-2277
csbridgeport@seweurodrive.com

Southwest Region

202 W. Daniieldale Rd.
DeSoto, TX 75115
P: (214) 330-4824
csdallas@seweurodrive.com

Western Region

30599 San Antonio St.
Hayward, CA 94544
P: (510) 487-3560
cshayward@seweurodrive.com

Large Industrial Gears

148 Finch Rd.
Wellford, SC 29385
P: (864) 439-8792
igorders@seweurodrive.com

www.seweurodrive.com



The ideal solution for harsh washdown environments

Picking/defeathering areas are the harshest environments in poultry processing facilities. Because these areas are not sanitary, daily high pressure washdown is required. These extreme conditions can cause serious motor damage due to ingress of water and other solid contaminants, resulting in a 6 to 8 week average life expectancy for a common picker motor.

Typical motor failures in washdown environments include single phasing, shorted windings, shorted conduit box connections, and bearing failures due to water or excessive overhung load on the output shaft.

The SEW-EURODRIVE Industry Option Package (IOP) protects the internal components and has a significantly longer life in poultry processing environments.

Feather picker motor features include:

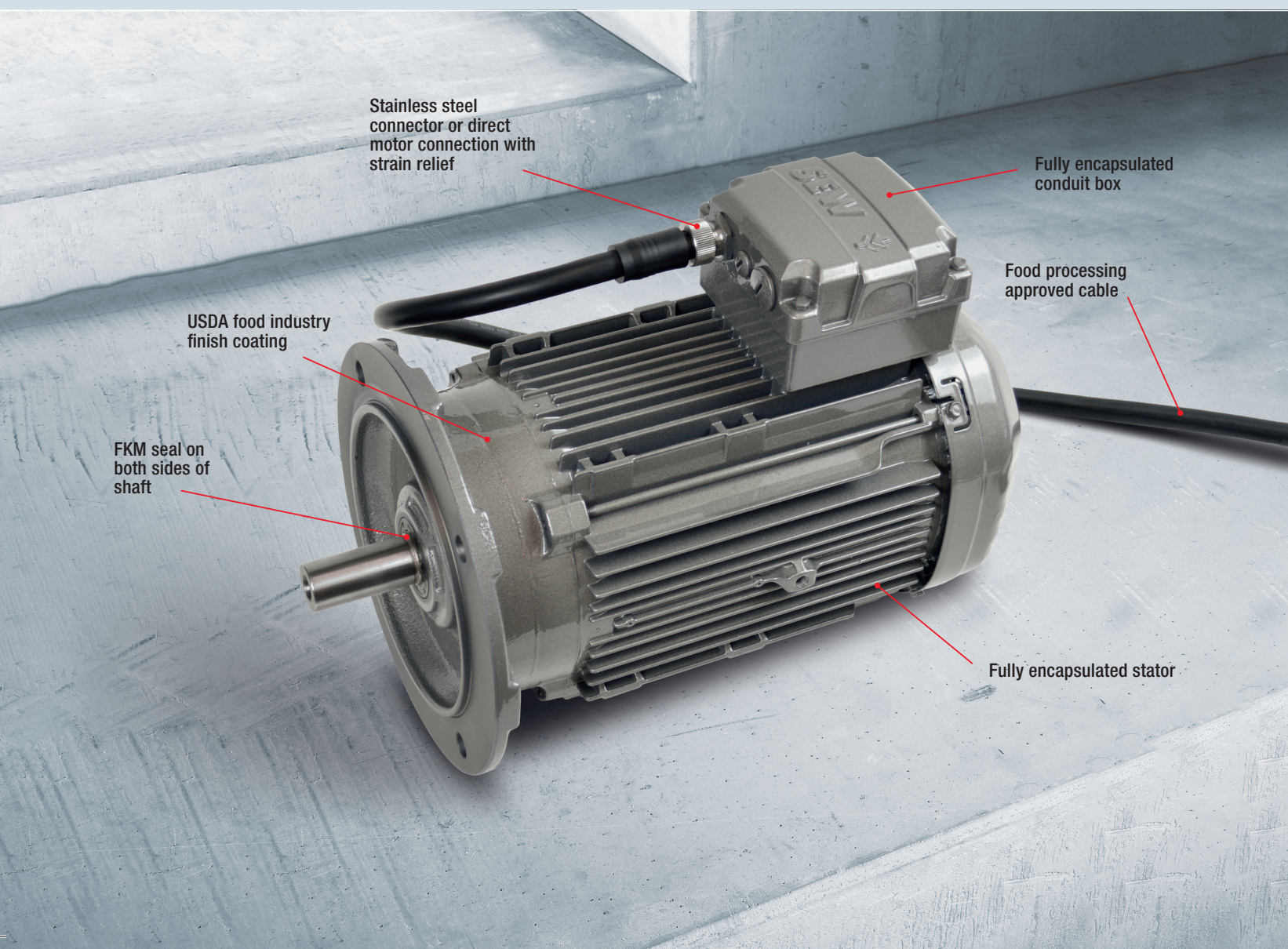
- Fully encapsulated inverter duty stator
- Fully encapsulated conduit box
- FKM seal on both sides of the shaft
- Multi-layered coating process
- Food processing approved power cable - 20'
- Stainless steel connector
- Stainless steel nameplate
- 3 HP, IEC flange-mounted motor - DRN100LM4
- 2-year warranty against motor failure from moisture damage

Fully encapsulated stator and conduit box prevents ingress to the windings and conduit connections



Special food industry finish coating

SEW-EURODRIVE has developed a multi-layered finish coating process specifically for the food industry. The food coating provides additional protection from the harsh environments common in poultry processing.



Stainless steel connector or direct motor connection with strain relief

Fully encapsulated conduit box

Food processing approved cable

USDA food industry finish coating

FKM seal on both sides of shaft

Fully encapsulated stator

Available configurations:

Part No.	Voltage	Connection	Cable Length
Q414730813	460V	Direct w/strain relief	20 ft.
Q414730816	460V	Stainless steel connector	20 ft.
Q414730822	230V	Direct w/strain relief	20 ft.
Q414730827	230V	Stainless steel connector	20 ft.