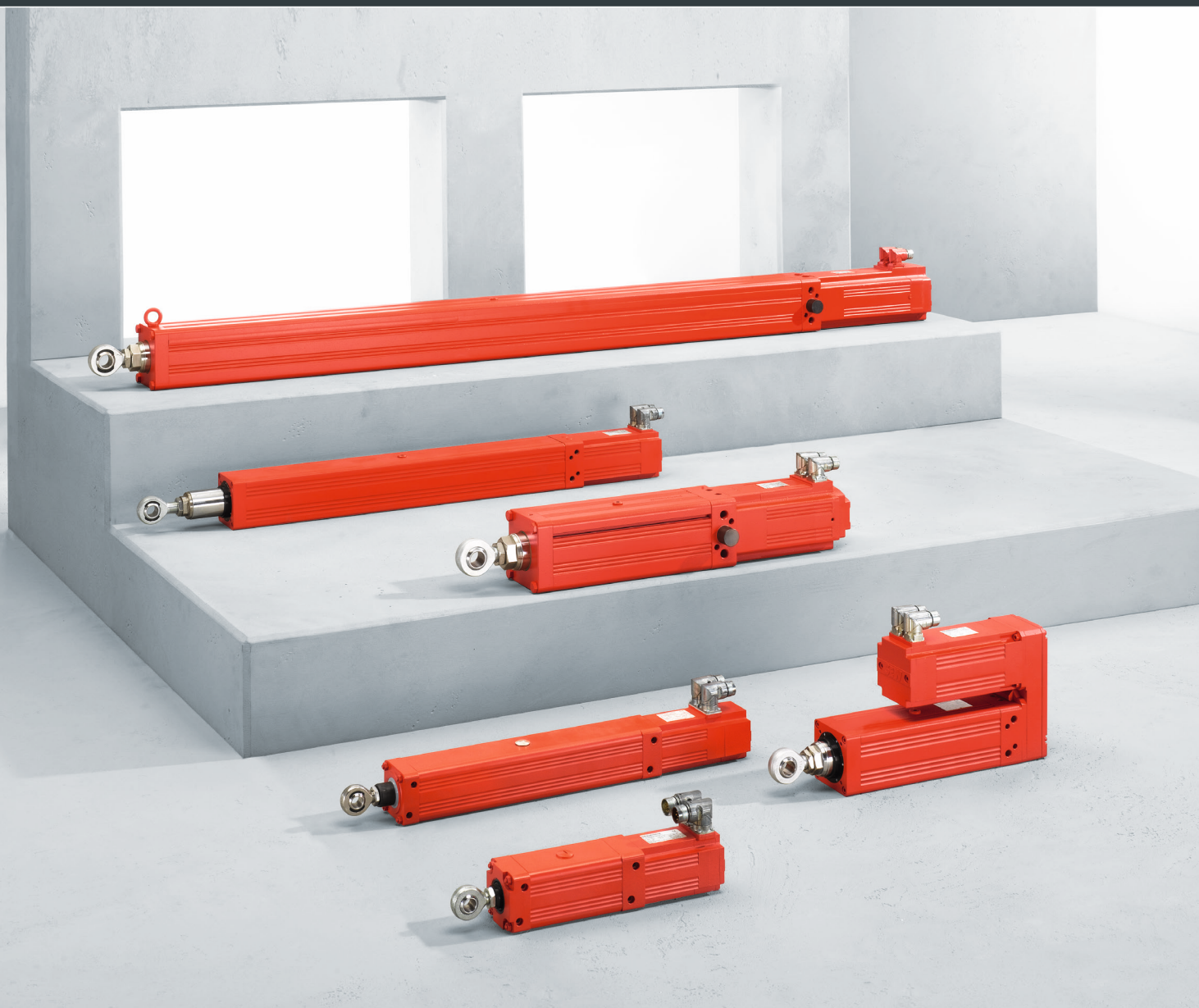


They provide for dynamic and powerful linear movement

**Standard and modular  
CMS.. electric cylinders**



## Optimized processes characterized by dynamics, force, and compact design

Applications with linear movement very often place high demands on the travel profile. Conventional solutions with pneumatic or hydraulic cylinders quickly reach their performance and system limits. Combining electric cylinders with the inverters from SEW-EURODRIVE results in intelligent drive systems that offer a high degree of flexibility and positioning accuracy as well as new options in programming, power control and diagnostic functions. These translate into new and reliable concepts that can be integrated into a variety of production processes.

The CMS.. electric cylinders in standard and modular design are precise, powerful and fast. Combined with drive electronics from SEW-EURODRIVE, you will obtain an economical and energy-efficient drive solution that ensures the necessary process safety in your system operation and can be easily integrated

### Overview of benefits

- Patented oil bath lubrication allows for lifelong maintenance-free operation without relubrication
- Service life can be doubled compared to market standard
- Very high thermal power density
- Intelligent drive system with positioning, programming, power control and diagnostics options allow for flexibility of the machine or system
- Economical operation as expensive compressed air is not necessary
- Straightforward installation and simple mounting as no piping is required for hydraulic or pneumatic ducts, no leakage
- Reduction in noise emission due to controlled acceleration of the customer mechanical elements, no noise from extracted air
- Simple integration into automation processes thanks to connection to all common bus systems

into existing automation systems, such as folding systems and robotic systems. This offers numerous advantages for process engineering and packaging, material handling, the print and plastics industry as well as wood processing.

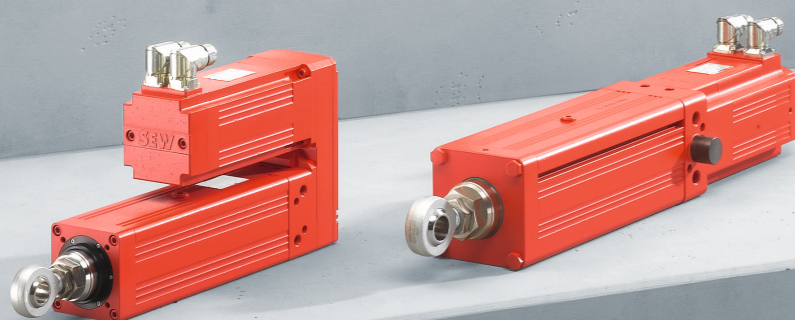
### Design variants

- Various spindle pitches for linear velocities (up to 0.5 m/s)
- Also available as brake servomotor with 24 V holding brake
- Resolver feedback or optional with absolute encoder
- Optional 24 V forced cooling fan
- Either with planetary roller screw drive or ball screw
- Numerous mounting options (between bolt/flange)
- Cardan joint

### Features

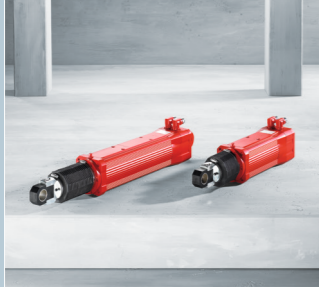
- Smooth, hard-chrome-plated piston rod for special requirements at certain ambient conditions, such as humidity or dust
- Integrated locking element for lifting rod (torque arm)

Can be used wherever high demands are placed on the travel profile and more than two positions need to be traveled to, e.g. in process engineering and packaging, in material handling, in the print and plastics industry as well as in wood processing.



Standard CMS.. electric cylinders / with grease lubrication

CMS50/71 series



Properties

- Equipped with permanent magnet rotors
- Precise, powerful and fast
- Combined with drive electronics from SEW-EURODRIVE, this series makes for energy-efficient drive solutions that ensure a high level of process reliability and that can be easily integrated into existing automation systems

Electrical data

Type	CMS71L		
Max. torque Nm	31.4	22.1 <sup>1)</sup>	24.4 <sup>1)</sup>
Standstill torque Nm	9.5		

<sup>1)</sup> Maximum permitted torque

Mechanical data

Rated speed $n_N$	2 000 rpm			
	3 000 rpm			
	4 500 rpm			
Spindle type	KGT <sup>2)</sup> 32x10	KGT <sup>2)</sup> 32x6	PGT <sup>3)</sup> 24x5	
Max. continuous feed force <sup>4)</sup> N	3 600	6 700	7 200	
Peak feed force N	17 000	20 000	15 000 20 000 <sup>5)</sup>	20 000
Stroke lengths mm	200	200	350	200
Max. speed mm/s	500	300	200	250

<sup>2)</sup> Ball screw

<sup>3)</sup> Planetary roller screw

<sup>4)</sup> Depending on average travel speed

<sup>5)</sup> In case of tensile loads

## Standard CMS.. electric cylinders / with oil bath lubrication

## CMSB50/63/71 series



## Properties

- Patented maintenance-free oil bath lubrication (lifetime lubrication)
- Very high thermal power density
- Especially low-noise operation
- Very short working strokes (< 1 mm)
- Combined with drive electronics from SEW-EURODRIVE, this series makes for energy-efficient drive solutions that ensure a high level of process reliability and that can be easily integrated into existing automation systems

## Electrical data

Type	NEW CMSB50S	NEW CMSB50M	NEW CMSB50L
Max. torque Nm	5.2	7 <sup>1)</sup>	7 <sup>1)</sup>
Standstill torque Nm	1.3	2.4	3.3

## Mechanical data

Rated speed $n_N$	3 000 rpm 4 500 rpm 6 000 rpm		
Spindle type	KGT <sup>2)</sup> 20x5	KGT <sup>2)</sup> 20x5	KGT <sup>2)</sup> 20x5
Max. continuous feed force <sup>4)</sup> N	1 200	2 200	2 200
Peak feed force N	5 300	8 000	8 000
Stroke lengths mm	70 / 100 / 150 / 200 / 300 / 400 / 600		
Max. speed mm/s	375	375	375

<sup>1)</sup> Maximum permitted torque<sup>2)</sup> Ball screw<sup>4)</sup> Depends on the average traveling velocity

## Electrical data

Type	CMSB63S	CMSB63M
Max. torque Nm	11.1	11.1 <sup>1)</sup>
Standstill torque Nm	2.9	5.3

## Mechanical data

Rated speed $n_N$	3 000 rpm 4 500 rpm 6 000 rpm			
Spindle type	KGT <sup>2)</sup> 25x6	PGT <sup>3)</sup> 20x5	KGT <sup>2)</sup> 25x6	PGT <sup>3)</sup> 20x5
Max. continuous feed force <sup>4)</sup> N	2 400	2 800	4 100	5 200
Peak feed force N	10 000		10 000	
Stroke lengths mm	60 / 100 / 160 / 180 / 200 / 400 / 600	100 / 200	60 / 100 / 160 / 180 / 200 / 400 / 600	100 / 200
Max. speed mm/s	450	375	450	375

## Electrical data

Type	CMSB71S	CMSB71M	CMSB71L
Max. torque Nm	19.2	25 <sup>4)</sup>	25 <sup>4)</sup>
Standstill torque Nm	6.4	9.4	13.1

## Mechanical data

Rated speed $n_N$	2 000 rpm 3 000 rpm 4 500 rpm 6 000 rpm		
Spindle type	KGT <sup>2)</sup> 32x6	KGT <sup>2)</sup> 32x6	KGT <sup>2)</sup> 32x6
Max. continuous feed force <sup>4)</sup> N	5 000	7 500	10 000
Peak feed force N	18 000	24 000	24 000
Stroke lengths mm	100 / 160 / 200 / 400 / 600 / 800 / 1 000 / 1 200		
Max. speed mm/s	450	450	450

<sup>1)</sup> Maximum permitted torque<sup>2)</sup> Ball screw<sup>3)</sup> Planetary roller screw<sup>4)</sup> Depending on average travel speed

## Modular CMSM.. electric cylinders

## CMSMB50 – 71 series / ACH or ACA (axially serial)



## Properties

- Separately available modular unit (linear gear unit) with the proven oil bath lubrication of the CMSB.. standard electric cylinder series
- Can be combined with the standard servomotors from SEW-EURODRIVE (CMP50/63/71) using ACH/ACA adapters

## Technical data

Type	NEW CMSMB50 / ACH or ACA	CMSMB63 / ACH or ACA	CMSMB71 / ACH or ACA
Max. permitted input torque Nm	7	11.1	25
Max. permitted input speed rpm	4 500	4 500	4 500
Peak feed force N	8 000	10 000	24 000
Stroke lengths mm	70 / 100 / 150 / 200 / 300 / 400 / 600	60 / 100 / 160 / 180 / 200 / 400 / 600	100 / 160 / 200 / 400 / 600 / 800 / 1 000 / 1 200
Spindle type	KGT <sup>1)</sup> 20x5	KGT <sup>1)</sup> 25x6	KGT <sup>1)</sup> 32x6

<sup>1)</sup> Ball screw

## Modular CMSM.. electric cylinders

## CMSMB50 – 71 series / AP (axially parallel)



## Properties

- Compact design
- Patented maintenance-free oil bath lubrication (lifetime lubrication)
- Very high thermal power density
- Very low-noise operation
- Optional water cooling
- Use of CMP50/63/71 standard servomotors

## Electrical data

Type	NEW CMSMB50/AP and		
	CMP50S	CMP50M	CMP50L
Max. torque Nm	5.2	7 <sup>1)</sup>	7 <sup>1)</sup>
Standstill torque Nm	1.3	2.4	3.3

## Mechanical data

Rated speed $n_N$	3 000 rpm		
	4 500 rpm		
	6 000 rpm		
Spindle type	KGT <sup>2)</sup> 20x5		
Max. continuous feed force N	1 200	2 200	2 200
Peak feed force N	5 300	8 000	8 000
Stroke lengths mm	70 / 100 / 150 / 200 / 300 / 400 / 600		
Max. speed mm/s	375	375	375

<sup>1)</sup> Max. permitted torque<sup>2)</sup> Ball screw

## Modular CMSM.. electric cylinders

## CMSMB50 – 71 series / AP (axially parallel)



## Electrical data

Type	CMSMB63/AP and		
	CMP63S	CMP63M	CMP63L
Max. torque Nm	11.1	11.1 <sup>1)</sup>	11.1 <sup>1)</sup>
Standstill torque Nm	2.9	5.3	7.1

## Mechanical data

Rated speed $n_N$	3 000 rpm		
	4 500 rpm		
	6 000 rpm		
Spindle type	KGT <sup>2)</sup> 25x6		
Max. continuous feed force N	2 400	3 600	4 800
Peak feed force N	10 000	10 000	10 000
Stroke lengths mm	60 / 100 / 160 / 180 / 200 / 400 / 600		
Max. speed mm/s	450	450	450

<sup>1)</sup> Max. permitted torque<sup>2)</sup> Ball screw

## Electrical data

Type	CMSMB70/AP and		
	CMP71S	CMP71M	CMP71L
Max. torque Nm	19.2	25 <sup>1)</sup>	25 <sup>1)</sup>
Standstill torque Nm	6.4	9.4	13.1

## Mechanical data

Rated speed $n_N$	2 000 rpm		
	3 000 rpm		
	4 500 rpm		
	6 000 rpm		
Spindle type	KGT <sup>2)</sup> 32x6		
Max. continuous feed force N	5 000	7 500	10 000
Peak feed force N	18 000	24 000	24 000
Stroke lengths mm	100 / 160 / 200 / 400 / 600 / 800 / 1 000 / 1 200		
Max. speed mm/s	450	450	450

<sup>1)</sup> Max. permitted torque<sup>2)</sup> Ball screw

## SEW-EURODRIVE is right there for you:

### Argentina

Tel. +54 3327 4572-84  
Fax +54 3327 4572-21  
sewar@sew-eurodrive.com.ar

### Australia

Tel. +61 3 9933-1000  
Fax +61 3 9933-1003  
enquires@sew-eurodrive.com.au

### Austria

Tel. +43 1 617 55 00-0  
Fax +43 1 617 55 00-30  
sew@sew-eurodrive.at

### Belarus

Tel. +375 17 298 47 56  
Fax +375 17 298 47 54  
sales@sew.by

### Belgium

Tel. +32 16 386-311  
Fax +32 16 386-336  
info@sew-eurodrive.be

### Brazil

Tel. +55 19 3835-8000  
sew@sew.com.br

### Cameroon

Tel. +237 233 39 02 10  
Fax +237 233 39 02 10  
sew@sew-eurodrive.cm

### Canada

Tel. +1 905 791-1553  
Fax +1 905 791-2999  
marketing@sew-eurodrive.ca

### Chile

Tel. +56 2 2757 7000  
Fax +56 2 2757 7001  
ventas@sew-eurodrive.cl

### China

Tel. +86 22 25322612  
Fax +86 22 25323273  
info@sew-eurodrive.cn

### Colombia

Tel. +57 1 54750-50  
Fax +57 1 54750-44  
sew@sew-eurodrive.com.co

### Czech Republic

Tel. +420 255 709 601  
Fax +420 235 350 613  
sew@sew-eurodrive.cz

### Denmark

Tel. +45 43 95 8500  
Fax +45 43 95 8509  
sew@sew-eurodrive.dk

### Finland

Tel. +358 201 589-300  
Fax +358 3 780-6211  
sew@sew.fi

### France

Tel. +33 3 88 73 67 00  
Fax +33 3 88 73 66 00  
sew@usocome.com

### Ghana

Tel. +233 303 963 772  
info@sew-eurodrive.com.gh

### Great Britain

Tel. +44 1924 893-855  
Fax +44 1924 893-702  
info@sew-eurodrive.co.uk

### Hungary

Tel. +36 1 437 06-58  
Fax +36 1 437 06-50  
office@sew-eurodrive.hu

### India

Tel. +91 265 3045200  
Fax +91 265 3045300  
marketing@seweurodriveindia.com

### Italy

Tel. +39 02 96 9801  
Fax +39 02 96 980 999  
sewit@sew-eurodrive.it

### Ivory Coast

Tel. +225 21 21 81 05  
Fax +225 21 25 30 47  
info@sew-eurodrive.ci

### Japan

Tel. +81 538 373811  
Fax +81 538 373814  
sewjapan@sew-eurodrive.co.jp

### Kazakhstan

Tel. +7 727 350 5156  
Fax +7 727 350 5156  
sew@sew-eurodrive.kz

### Kenya

Tel. +254 791 398840  
info@sew.co.ke

### Malaysia

Tel. +60 7 3549409  
Fax +60 7 3541404  
sales@sew-eurodrive.com.my

### Mexico

Tel. +52 442 1030-300  
Fax +52 442 1030-301  
scmexico@seweurodrive.com.mx

### Morocco

Tel. +212 522 88 85 00  
Fax +212 522 88 84 50  
sew@sew-eurodrive.ma

### Netherlands

Tel. +31 10 4463-700  
Fax +31 10 4155-552  
info@sew-eurodrive.nl

### New Zealand

Tel. +64 9 2745627  
Fax +64 9 2740165  
sales@sew-eurodrive.co.nz

### Norway

Tel. +47 69 24 10 20  
Fax +47 69 24 10 40  
sew@sew-eurodrive.no

### Paraguay

Tel. +595 991 519695  
Fax +595 21 3285539  
sewpy@sew-eurodrive.com.py

### Peru

Tel. +51 1 3495280  
Fax +51 1 3493002  
sewperu@sew-eurodrive.com.pe

### Poland

Tel. +48 42 293 00 00  
Fax +48 42 293 00 49  
sew@sew-eurodrive.pl

### Portugal

Tel. +351 231 20 9670  
Fax +351 231 20 3685  
info@sew-eurodrive.pt

### Russia

Tel. +7 812 3332522  
Fax +7 812 3332523  
sew@sew-eurodrive.ru

### Singapore

Tel. +65 68621701  
Fax +65 68612827  
sewsingapore@sew-eurodrive.com

### Slovakia

Tel. +421 2 33595 202  
Fax +421 2 33595 200  
sew@sew-eurodrive.sk

### South Africa

Tel. +27 11 248 7000  
Fax +27 11 248 7289  
info@sew.co.za

### South Korea

Tel. +82 31 492-8051  
Fax +82 31 492-8056  
master.korea@sew-eurodrive.com

### Spain

Tel. +34 94 4318470  
Fax +34 94 4318471  
sew.spain@sew-eurodrive.es

### Sweden

Tel. +46 36 34 42 00  
Fax +46 36 34 42 80  
jonkoping@sew.se

### Switzerland

Tel. +41 61 41717-17  
Fax +41 61 41717-00  
info@imhof-sew.ch

### Tanzania

Tel. +255 22 277 5780  
Fax +255 22 277 5788  
info@sew.co.tz

### Thailand

Tel. +66 38 454281  
Fax +66 38 454288  
sewthailand@sew-eurodrive.com

### Turkey

Tel. +90 262 999 1000-04  
Fax +90 262 999 1009  
sew@sew-eurodrive.com.tr

### Ukraine

Tel. +380 56 370 3211  
Fax +380 56 372 2078  
sew@sew-eurodrive.ua

### United Arab Emirates

Tel. +971 4 8806461  
Fax +971 4 8806464  
info@sew-eurodrive.ae

### Uruguay

Tel. +598 2 2118189  
Fax +598 2 2118190  
sewuy@sew-eurodrive.com.uy

### USA

Tel. +1 864 439-7537  
Fax +1 864 439-7830  
cslyman@seweurodrive.com

### Uzbekistan

Tel. +998 71 2359411  
Fax +998 71 2359412  
sew@sew-eurodrive.uz

### Venezuela

Tel. +58 241 832-9804  
Fax +58 241 838-6275  
ventas@sew-eurodrive.com.ve

## How we're driving the world



**SEW-EURODRIVE**  
Driving the world

**SEW**  
**EURODRIVE**

SEW-EURODRIVE GmbH & Co KG  
P.O.Box 30 23  
76642 Bruchsal/Germany  
Tel. +49 7251 75-0  
Fax +49 7251 75-1970  
sew@sew-eurodrive.com

→ [www.sew-eurodrive.com](http://www.sew-eurodrive.com)