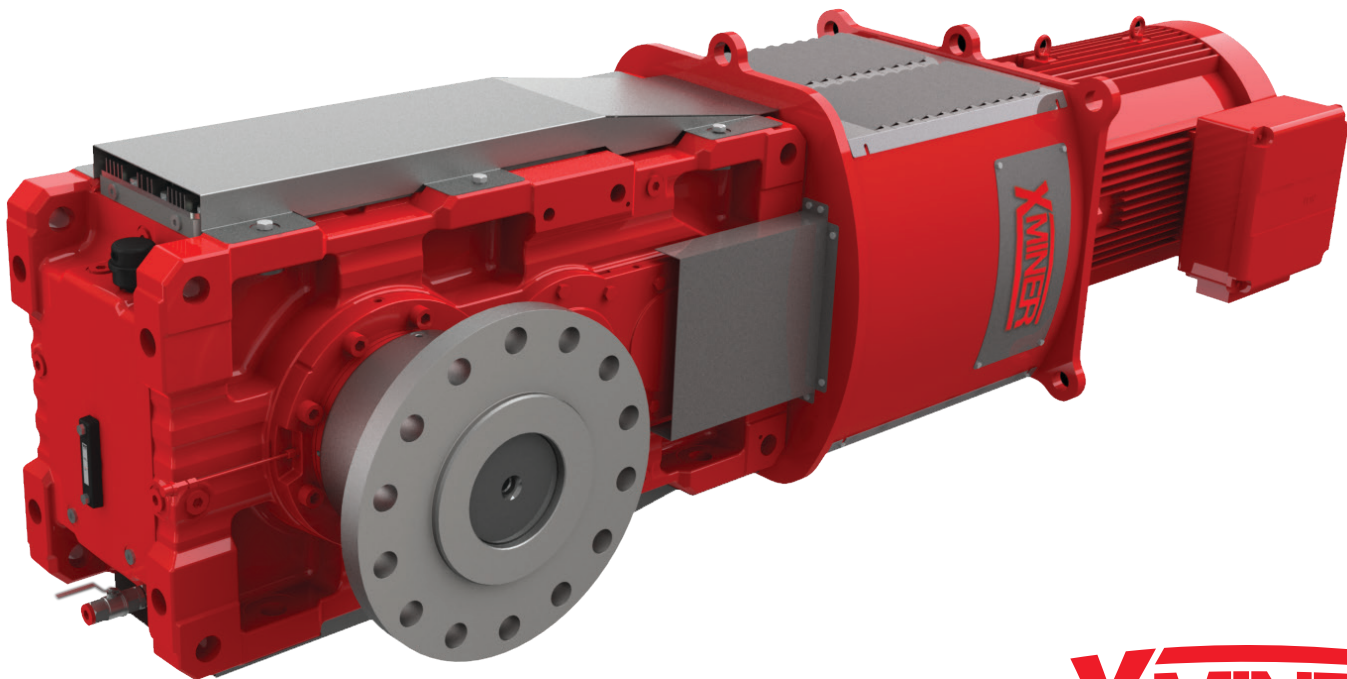


XMiner – drive package for mining applications

Complete drive package engineered for the mining industry



XMINER

World class quality + local availability + local support

The **XMiner** is specifically designed for the rigorous demands of mining and aggregates applications including conveyor systems, crushers, and apron feeders. Built on the trusted X.e series platform, the XMiner units are now available with local engineering, stocking, and assembly in Wellford, South Carolina, ensuring quick and reliable support for North American customers.

Features and Benefits

Features

- Reversible housing; can be inverted for either right-hand or left-hand shaft location
- Extremely robust housing
- Helical-bevel gear unit
- Single-piece or split-gear unit housing
- Numerous torque arm anchor mounting locations
- Distinctive modular technology
- Large selection of standard accessories
- Either CCW or CW rotation

Benefits

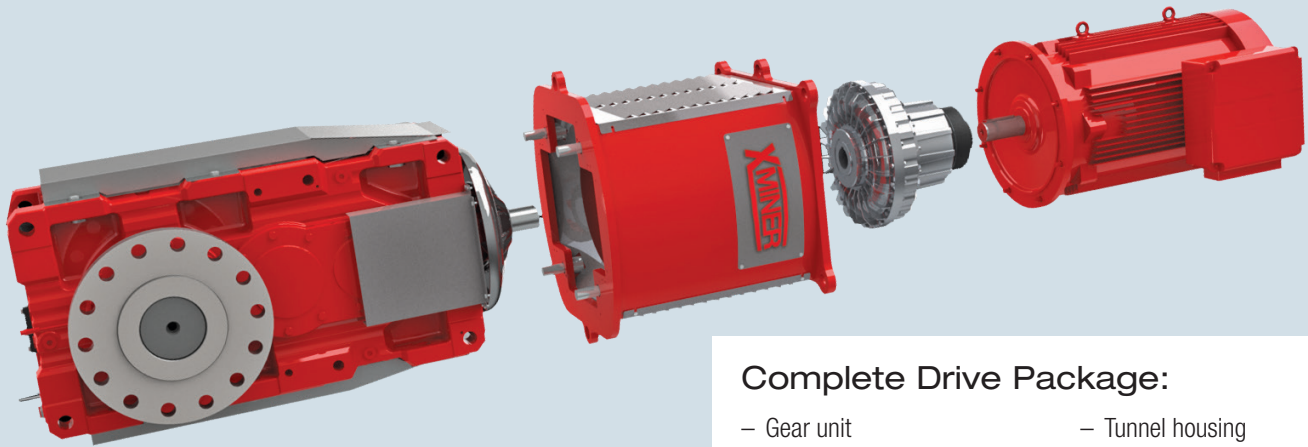
- High power density reduces weight and cost
- Patented cooling systems eliminate the need for expensive cooling alternatives
- Reduced inventory/spares
- Local engineering and application support provided for proper sizing
- Quick delivery times for standard versions and spare parts
- Worldwide service and customization options are available

Mining Applications

- Conveyor systems
- Chain conveyors
- Belt conveyors
- Crushers
- Apron feeders

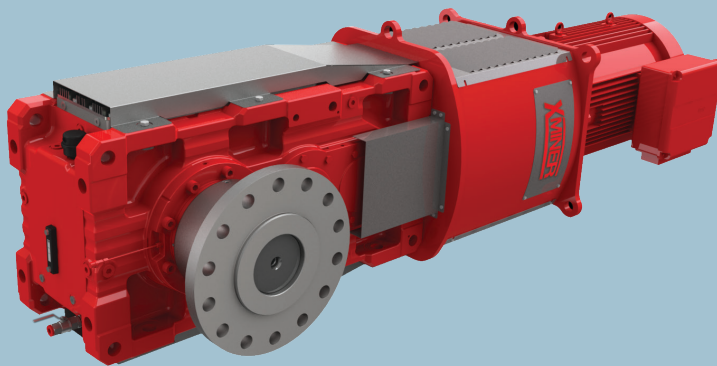
Size and Torque Capacity

Gear ratios and torques			
X.K.. bevel-helical gear units: 2, 3 and 4 stages, gear ratio $i = 6.3$ to 450			
Gear unit size	Torque capacity M_{N2} [lb-in]	Gear unit size	Torque capacity M_{N2} [lb-in]
100	60,200	200	699,000
110	75,200	210	797,000
120	113,000	220	991,000
130	142,000	230	1,159,000
140	195,000	240	1,381,000
150	243,000	250	1,549,000
160	319,000		
170	398,000		
180	513,000		
190	575,000		



Complete Drive Package:

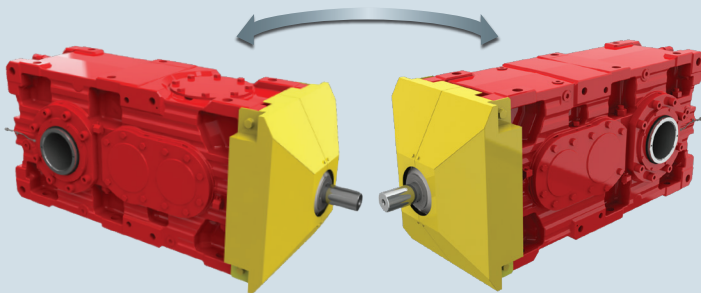
- Gear unit
- Fluid or flexible coupling
- Rigid flange coupling
- Tunnel housing
- Torque arm
- SEW Motor (up to 500 HP)



Plug and Play:

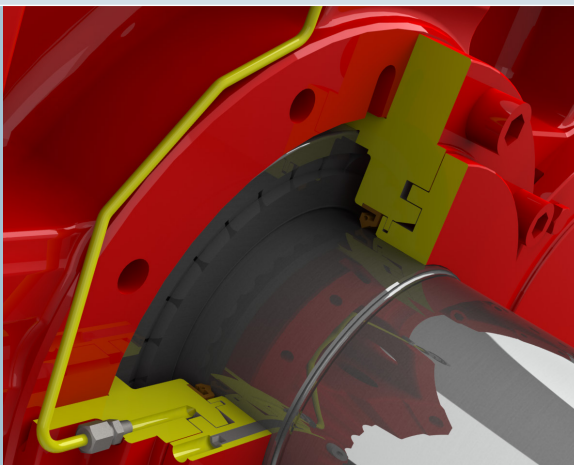
- Alignment free
- Easy drop-in

Reversible gear unit housing



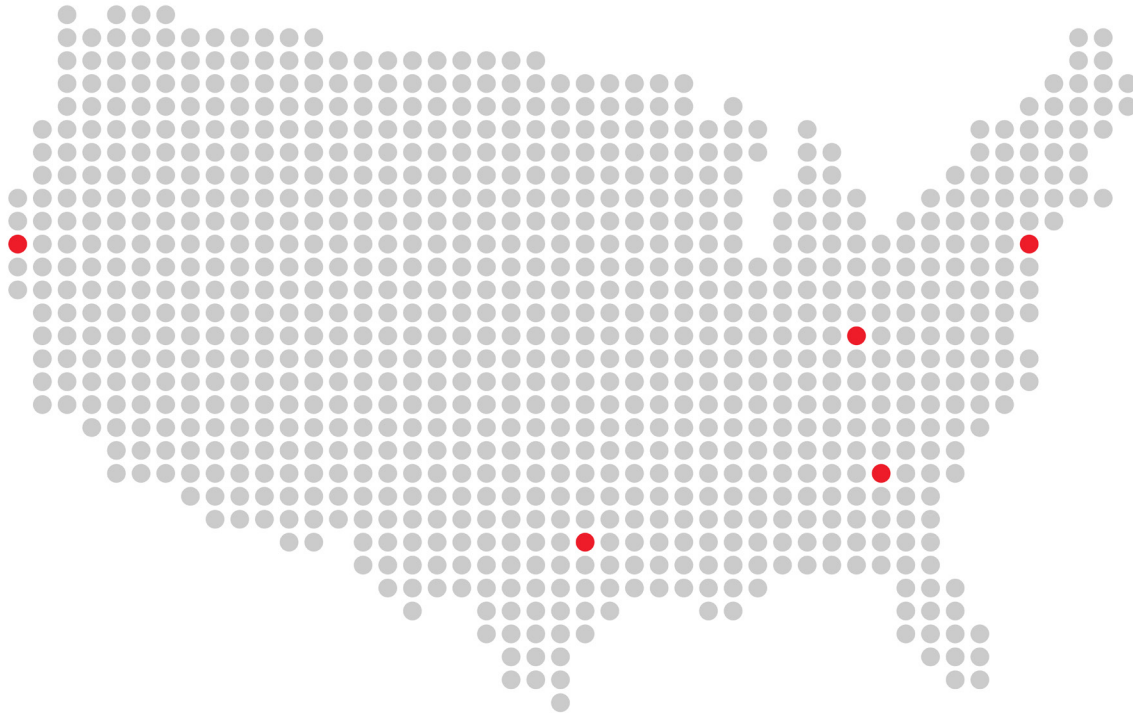
Reversible Housing Design:

- High flexibility with conveyor drives
- Right-hand or Left-hand shaft location available in one unit
- Less inventory/spares



Taconite Heavy Duty Sealing System:

- Abrasive environments: Mining, Cement
- Labyrinth sealing path
- Grease purgeable
- Laminar rings prevent grease from getting pumped into gear unit seals



U.S. locations

U.S. Headquarters/Southeast Region

SEW-EURODRIVE, Inc.
220 Finch Road
Wellford, SC 29385
P: (864) 439-7537
cslyman@seweurodrive.com

Southwest Region

SEW-EURODRIVE, Inc.
202 W. Daniieldale Rd.
DeSoto, TX 75115
P: (214) 330-4824
csdallas@seweurodrive.com

Western Region

SEW-EURODRIVE, Inc.
30599 San Antonio St.
Hayward, CA 94544
P: (510) 487-3560
cshayward@seweurodrive.com

Midwest Region

SEW-EURODRIVE, Inc.
2001 West Main St.
Troy, OH 45373
P: (937) 335-0036
cstroy@seweurodrive.com

Northeast Region

SEW-EURODRIVE, Inc.
2107 High Hill Rd.
Bridgeport, NJ 08014
P: (856) 467-2277
csbridgeport@seweurodrive.com

Industrial Gears

SEW-EURODRIVE, Inc.
148 Finch Rd.
Wellford, SC 29385
P: (864) 439-8792
igssorders@seweurodrive.com