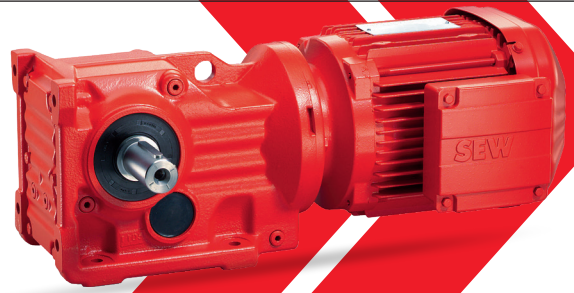


Gearmotors

SEW-EURODRIVE offers a full line of high efficiency right-angle, inline, and parallel-shaft gear units and modular gearmotors



POTENTIAL USES / TYPICAL APPLICATIONS



Horizontal materials handling technology
Roller conveyor, chain conveyor, belt conveyor



Vertical materials handling technology
Hoist



Materials handling technology with changes of direction
Turntable, trolley

THE ADVANTAGES AT A GLANCE



Flexible
Can be adapted to your requirements and needs



Scalable
– speed and force
– torque
– safety factors

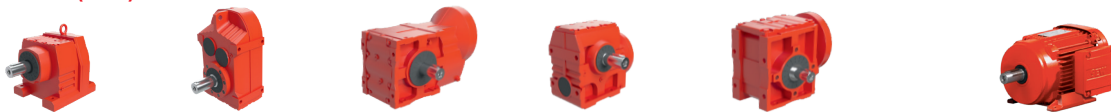


Durable
Thanks to high-quality wear components and intelligent/innovative designs



Available
Global modular concept guarantees consistent product and parts availability

OVERVIEW OF TECHNOLOGY (NEW)



Gear units	Inline helical gear units (R..)	Parallel-shaft helical gear units (F..)	Helical-bevel gear units (K..)	Helical-worm gear units (S..)	SPIROPLAN® gear units (W..)	3-phase motors	
Flow of force	Axial		Angular			Number of poles	2, 4, 6, 8, 4/2, 8/2, 8/4
Type	RX..7 (single-stage) 6 sizes 57 – 107	–	K..9 (2-stage) 4 sizes 19 – 49	S..7 (2-stage) 7 sizes 37 – 97	W..0 (1-stage) 3 sizes 10 – 30	Type	Single-speed: DRN.., DRU.., DR2C.., DR2S.., DR2L.., DR2M.. 31 sizes: 56 – 315
	R..7 (2-/3- stage) 14 sizes 07 – 167	F..7 (2-/3-stage) 11 sizes 27 – 157	K..7 (3-stage) 12 sizes 37 – 187	S..7p (2-stage) 7 sizes 37p – 97p	W..9 (2-/3-stage) 5 sizes 19 – 59		Pole-changing: DR2S.. 10 sizes: 63 – 180
Maximum output torque Nm	RX..7: 69 – 830	–	K..9: 80 – 500	S..7: 92 – 4000	W..0: 30 – 70	Power kW	DR2S..: 0.09 – 96 DRN..: 0.09 – 375
	R..7: 50 – 20 000	F..7: 120 – 20 000	K..7: 200 – 53 000	S..7p: 105 – 4300	W..9: 80 – 600		DRU..: 0.75 – 375 DR2C..: 0.69 – 20
Reduced backlash	R..7: yes	F..7: Yes	K..7: Yes	–	–	Frequency Hz	50, 60, 50/60
Gear unit ratio i	RX..7: 1.30 – 8.65	–	K..9: 2.81 – 75.20	–	W..0: 6.57 – 75.00	IE class	DRN..: IE3 Premium Efficiency
	R..7: 3.21 – 289.74	F..7: 3.77 – 281.71	K..7: 3.98 – 197.37	S..7/S..7p: 3.97 – 288.00	W..9 / W..9HG: 4.68 – 2426.20		DRU..: IE4 Super Premium Efficiency DR2C..: IE5
Double gear unit ratio i	–	–	K..9 R..7: 75 – 7137	–	–		DR2S: IE1 (S1 – S3, S9)
	R..7 R..7: 90 – 27,001	F..7 R..7: 87 – 31 434	K..7 R..7: 94 – 32 625	S..7/S..7p R..7: 110 – 33 818	W..9 R..7: 72 – 4815		

2269 1626 / US / 072024